

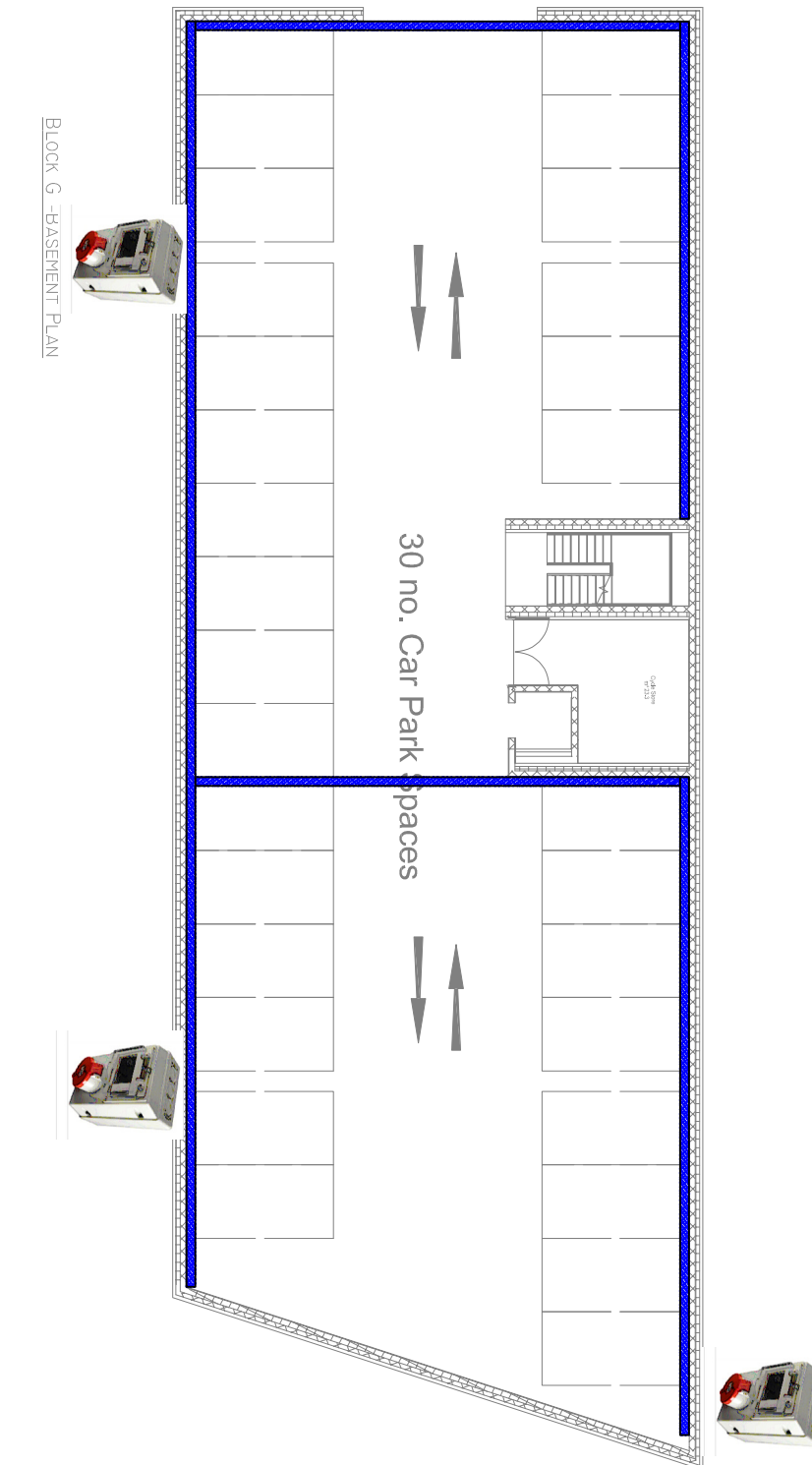
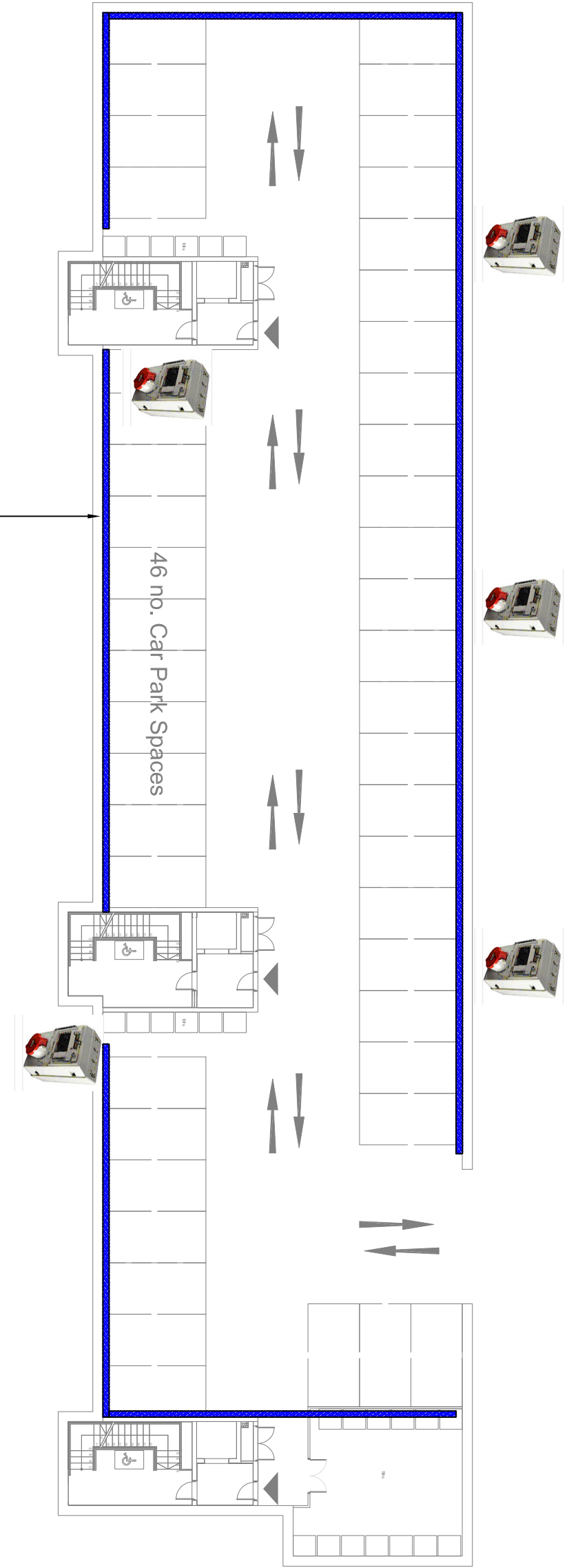
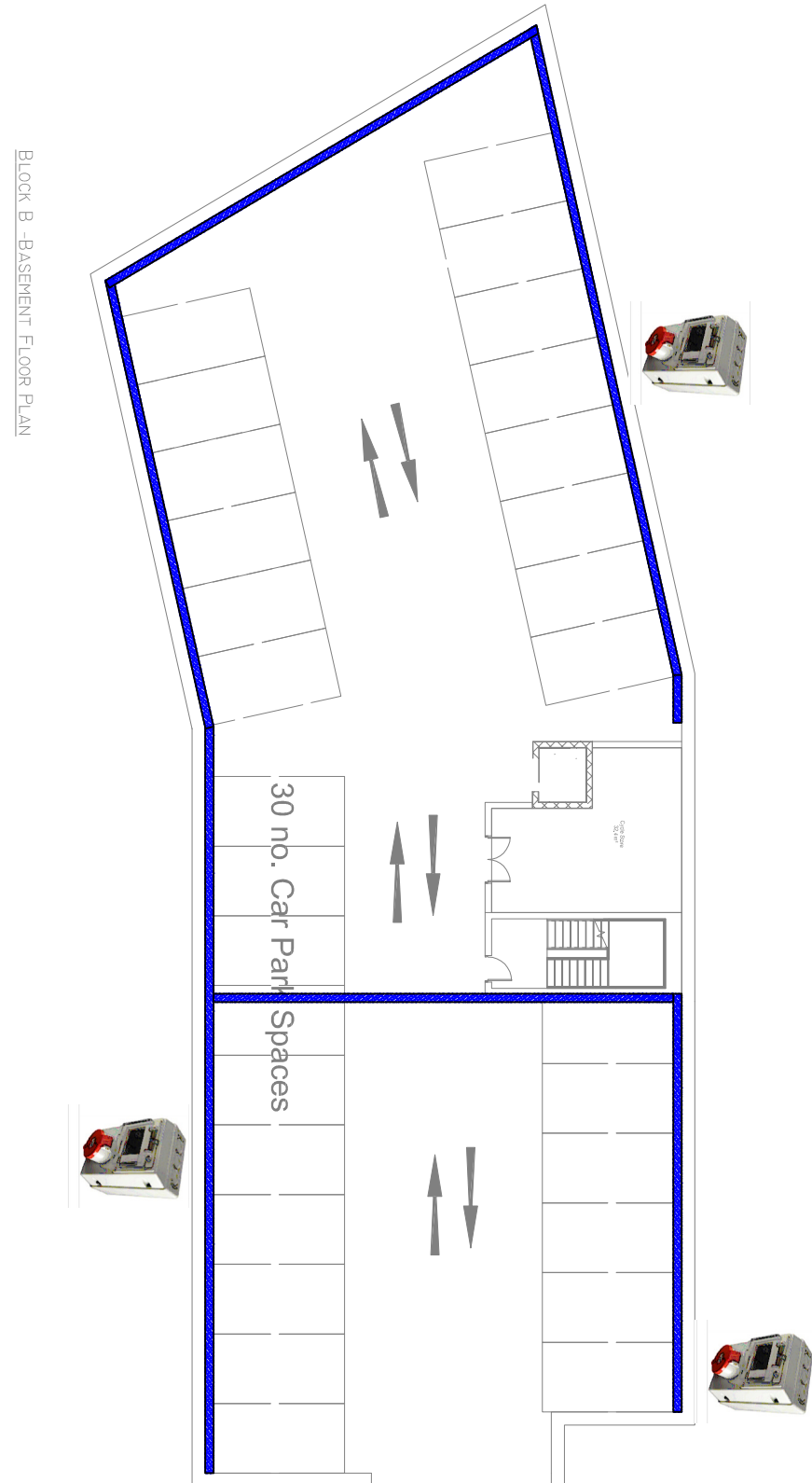
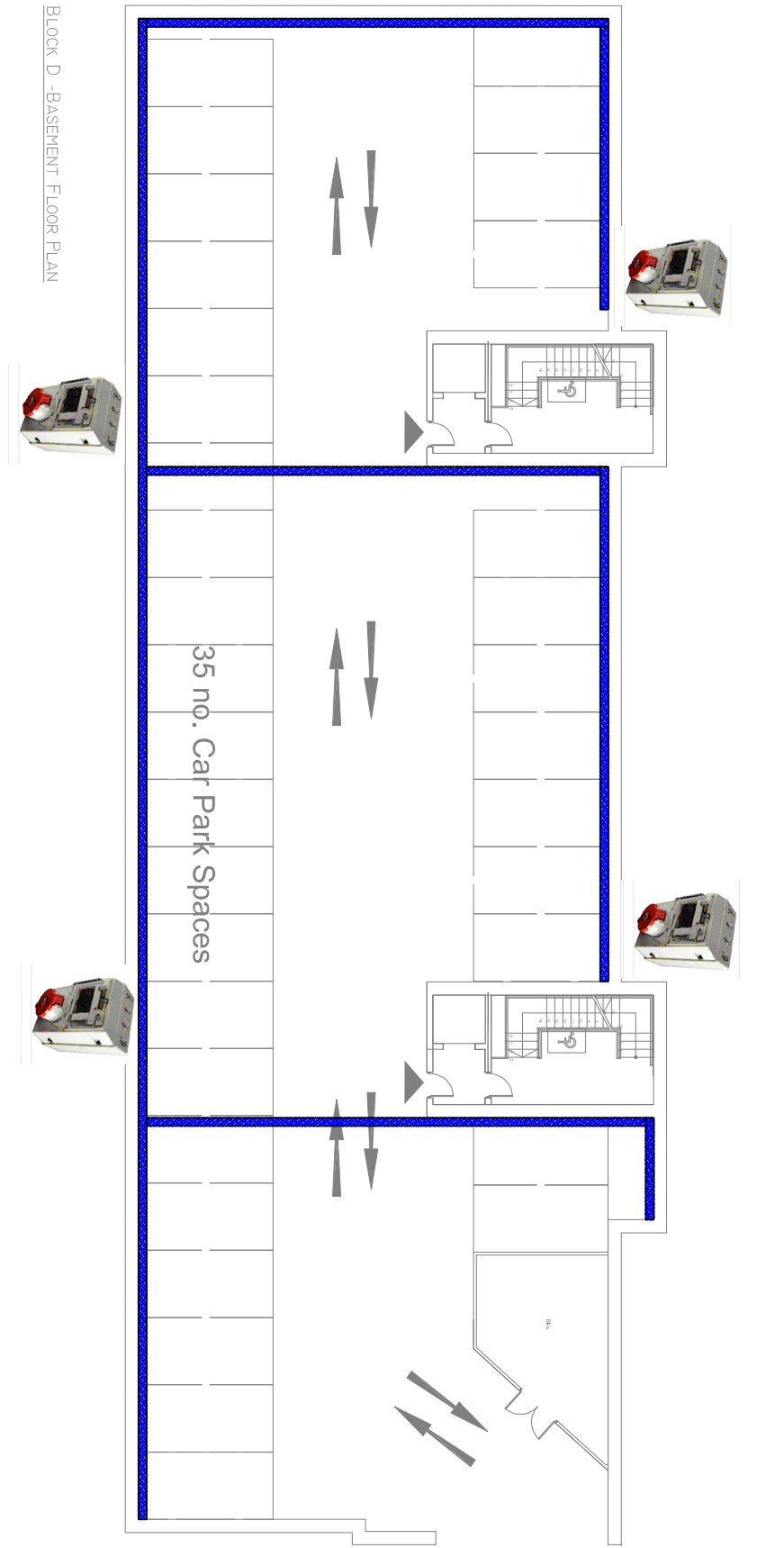
NOTES:
ANY DISCREPANCIES OR OMISSIONS TO BE REPORTED TO MORLEY WALSH CONSULTING ENGINEERS IMMEDIATELY.
DO NOT SCALE - WORK FROM FIGURED DIMENSIONS ONLY.

THIS DRAWING TO BE READ IN CONJUNCTION WITH ALL CIVIL ENGINEERS' STRUCTURAL ENGINEERS, ARCHITECTS & ALL OTHER RELEVANT DRAWINGS & SPECIFICATIONS RELATING TO THE PROJECT.

ALL DIMENSIONS TO BE CONFIRMED ON SITE.

THIS DRAWING IS THE PROPERTY OF MORLEY WALSH CONSULTING ENGINEERS AND IT OR ITS CONTENTS CANNOT BE COPIED, REPRODUCED OR OTHERWISE USED WITHOUT THE PERMISSION & CONSENT OF MORLEY WALSH CONSULTING ENGINEERS. ©

GARO COMBINATION UNITS 32A IP44 DOMESTIC.
ELECTRIC VEHICLE CHARGEPOINT: UNIT LOCATED ON WALLS BETWEEN COLUMNS OR ON COLUMNS
IN A SAFE AND CONSPICUOUS LOCATION WITH SIGN OVER "ELECTRIC VEHICLE CHARGE POINT"
APPROX DIMS 160x145x220 (WxDxH)



FUNCTIONING EV CHARGE POINTS.

CABLE CONTAINMENT AROUND PERIMETER OF BASEMENT FOR
FUTURE INSTALLATION OF EV CABLEING & CHARGE POINTS.

2	AMENDED TO CURRENT SITE PLAN ISSUED FOR INFORMATION & COMMENT	01-09-21
1	AMENDED TO CURRENT SITE PLAN ISSUED FOR INFORMATION & COMMENT	11-02-21
0	INDICATIVE EV PARKING ADDED/ISSUED FOR INFORMATION & COMMENT	28-06-20
REV. No.	DESCRIPTION	DATE



MORLEYWALSH
consulting engineers

Mechanical, Electrical & Energy Consultants

Domnick Court,
27 Dundalk Street,
Dundalk 1

Phone: +353 1 8723287
Email: info@morleywalsh.com
Web: www.morleywalsh.com

PROJECT CLIENT:
RESIDENTIAL DEVELOPMENT AT
CLONMINCH, TULLAMORE, CO. OFFALY
FOR Steinfort Investments Fund

ARCHITECT:
VAN DIJK ARCHITECTS
MILHOUSE, MILL ST, DUNDALK, CO. LOUTH

DRAWING TITLE:
PROPOSED LOCATION OF EV CAR CHARGING
POINTS BLOCKS D & E BASEMENT CAR PARK

DRAWING REFERENCE:	DATE:	DRAWING:	SCALE & DIMS:
314360103	FEB 21	DC	1:250 1:500